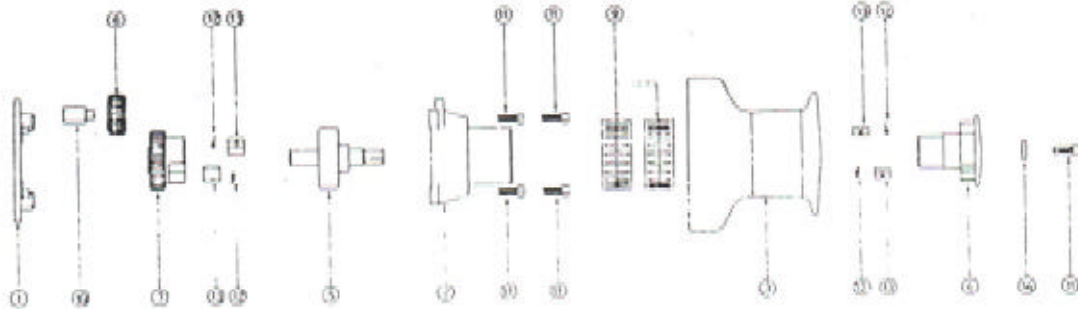
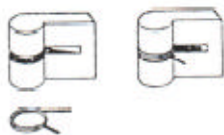


BARLOW **2 SPEED WINCH****#19 & #23****PLACEMENT OF PAWL SPRING**

Place straight leg of spring
against slit of pawl

Item No	Model #19 Part No	Model #23 Part No	Description	Qty
1	19-002	22-002	Base	1
2	19-003	23-003	Gearbox	1
3	-- 23-004 --		Drum	1
4	19-005	23-005	Top Cap	1
5	-- 23-006 --		Mainshaft Assembly	1
6	19-008	22-008	Idler Gear	1
7	19-012	22-012	Pinion	1
9		01-011	Bearing (Black)	2
10	19-013	01-124	Idler Shaft	1
11		01-205	Cap Screw	5
12		01-300	Torsion Spring	4
13		01-400	Ratchet Pawl	4
14		01-502	Retaining Washer	1

SERVICE INFORMATION - #19 & #23**To install:**

1. Using Barlow dismantling handle and 3/16 Allen key, remove the capscrew (11) in the top cap (4).
2. Lift drum (3) and top cap (4) together from gearbox (2) and base (1).
3. Bolt base (1) to flat surface drilled to take five bolts up to 6mm dia. on an 86mm bolt circle dia. It is not necessary to remove the gearbox (2) from the base (1). Use base (1) as a template.
4. Slide the drum (3) and top cap (4) together over the black bearings (9).
5. Firmly tighten the capscrew (11) in the top cap (4).

To lubricate:

1. Dismantle as in steps 1 & 2 of install above.
2. Remove the black bearings (9) from the gearbox (2). Remove four cap screws (16) and lift gearbox (2) from base (1). Remove mainshaft assembly (5) pinion (7) and its pawls (13) and springs (12) and remove idler gear (6) and shaft (10).
3. Remove top cap (4) from drum (3) and remove its pawls (13) and springs (12) and retaining washer (14).
4. Clean all parts in petroleum solvent, dry and grease with waterproof grease (Barlow Yacht Grease recommended). Lubricate the pawls (13) and springs (12) with a few drops of SAE30 oil. Note - Do not grease the pawls.
5. Reverse dismantling procedure.

Tools Required:

3/16 Allen Key, Barlow dismantling handle (01-821)

Inspection and Lubrication:

Quarterly lubrication is recommended. Inspect more frequently during racing season. Care should be taken in case of aluminium winch. To minimize wear, monthly cleaning and lubrication of the aluminium drum is advisable.