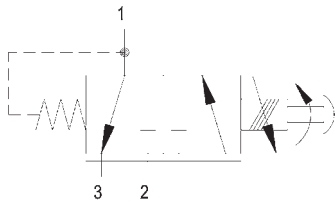


EPRV2-8 - Proportional valve

Proportional reducing/relief, spool
7.6 L/min (2 USgpm) • 35 bar (500 psi)



Operation

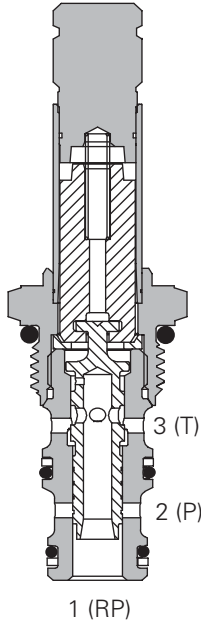
In the de-energized position, pressure inlet port 2 is closed and reduced pressure port 1 is open to return port 3. As electrical current is increased, port 2 opens to port 1 and port 3 closes, proportionally increasing pressure at port 1.

If the pressure at port 1 exceeds the setting of the valve, the spool will shift further and relieve to port 3.

Features

Hardened and ground components for accurate consistent control and a long life. IP69K Tough coil compatibility continuously rated.

Sectional view



Performance data

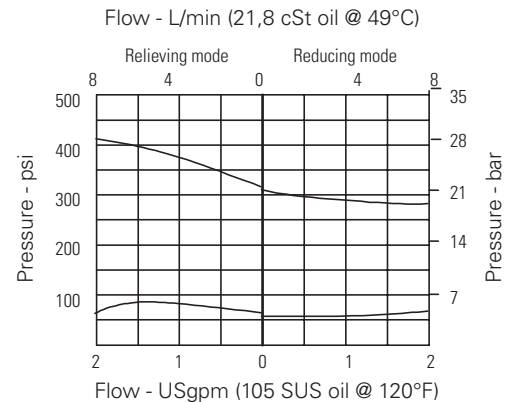
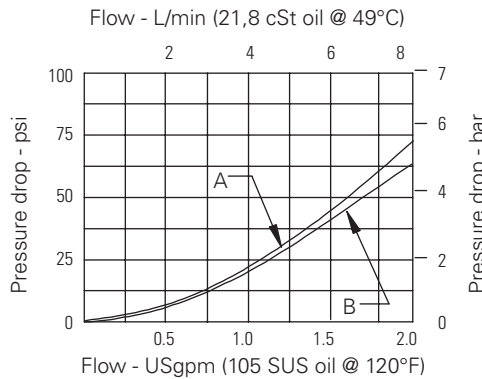
Ratings and specifications

Performance data is typical with fluid at 21,8 cSt (105 SUS) and 49°C (120°F)

Maximum inlet pressure	35 bar (500 psi)
Cartridge fatigue pressure (infinite life)	35 bar (500 psi)
Reduced pressure range	0-22 bar (0-320 psi)
Maximum operating flow	7,6 L/min (2 USgpm)
Temperature range	-40° to 120°C (-40° to 248°F)
Cavity	C-8-3
Fluids	All general purpose hydraulic fluids such as: MIL-H-5606, SAE 10, SAE 20 etc.
Filtration	Cleanliness code 18/16/13
Recommended PWM frequency	150 Hz
Hysteresis @ 150 Hz PWM	5%
Housing material (standard)	Aluminum
Weight including coil	0,29 kg (.64 lbs)
Seal kit	02-179451 (Buna-N), 02-179452 (Viton®)

Viton is a registered trademark of E.I. DuPont

Pressure drop curves

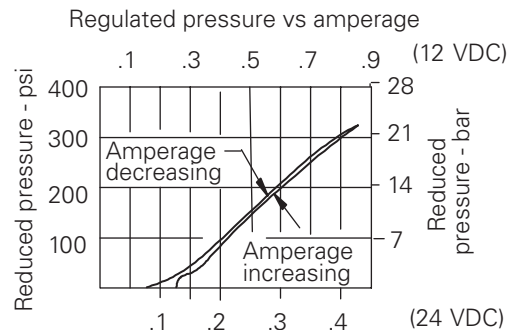
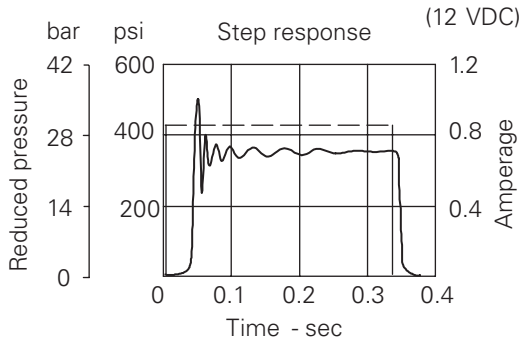


A - Port 1 to port 3 B - Port 2 to port 1

Description

This is a low pressure proportional direct acting pressure reducing valve with a reverse relief screw in cartridge valve. It is ideal for the control of compensators on a pump or brake and clutch systems on a transmission circuit.

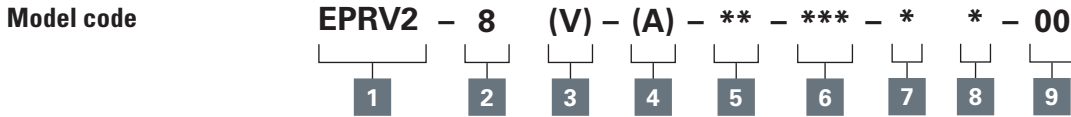
Performance curves



Where measurements are critical request certified drawings. We reserve the right to change specifications without notice.

EPRV2-8 - Proportional valve

Proportional reducing/relief, spool
76 L/min (2 USgpm) • 35 bar (500 psi)



- 1 Function**
EPRV2 - Proportional reducing/relieving valve

- 2 Size**
8 - 8 size

- 3 Seal material**
Blank - Buna-N
V - Viton®

- 4 Valve housing material**
Omit for cartridge only
A - Aluminum

5 Port size

Code	Port size	Housing number
Aluminum single		
0	Cartridge only	
4T	SAE 4	02-160741
6T	SAE 6	02-160742
2G	1/4" BSPP	02-160739
3G	3/8" BSPP	02-160740

See section J for housing details.

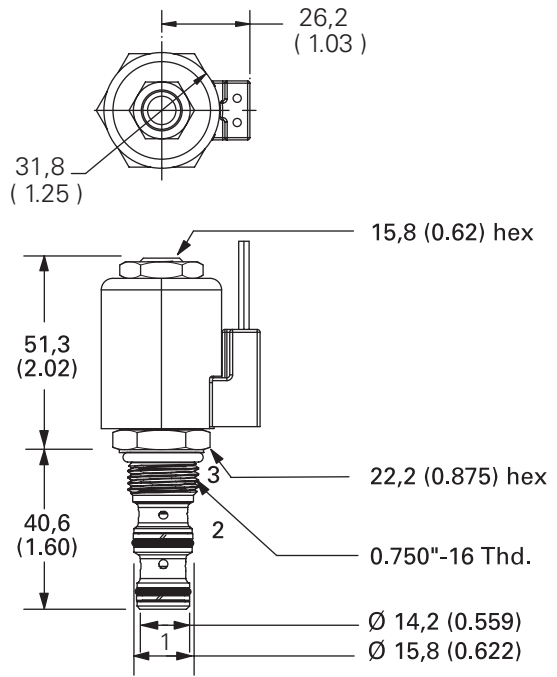
- 6 Voltage rating**
00 - No coil
12D - 12VDC
24D - 24VDC
12B - 12VDC/w diode*
24B - 24VDC/w diode*
- *Optional arc suppression diode.
Note: This valve uses the standard S series coils, see section C for coil part numbers and specifications.

- 7 Connector types**
Blank - No coil
G - DIN 43650
Q - Spade Terminals
W - Flying Lead
N - Deutsch
Y - Amp JR
- For coil part numbers and dimensions see section C.

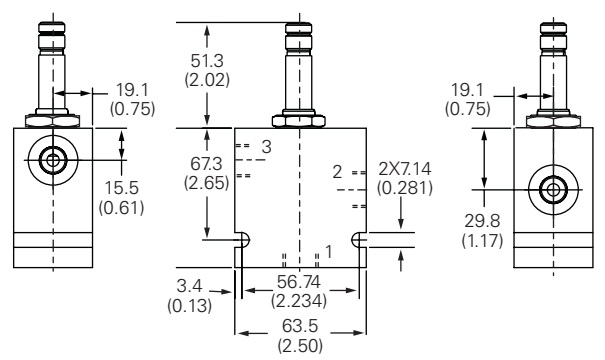
- 8 Coil**
S - S series coils
-
- 9 Special features**
00 - None
- Only required if valve has special features, omitted if "00."

Dimensions
mm (inch) Torque cartridge in aluminum or steel housing 34-41 Nm (25-30 ft lbs)

Cartridge only
Valve is shown with "N" coil.



Installation drawing



Warning
Maintain 5-8 Nm (4-6 ft lbs) maximum torque on valve tube nut. Over tightening may cause valve failure.